



ENTERPRISE INTRODUCTION



Introduction

Hehexin Stone Industry is located in Yunfu City, Guangdong Province, known as the "China Stone Production Base". The company possesses a comprehensive range of CNC production equipment, systems and a professional team with fine craftsmanship. With a chain production mode including composite stone panel processing, supporting complementary of home furnishing and commercial engineering. Our factory provides precise and in-depth services to various clients.



Zongji New Material (FOSHAN ZONGJI MATERIALS TECHNOLOGY Co.,Ltd)

The company is located in Foshan City, Guangdong Province, known as the "China Manufacturing Base". Support by its own factory (Hehexin Stone Industry), it has evolved into a conglomerate that provides customization of engineering and home furnishing, new furniture development, and import and export trade. This enables our company to offer optimized and efficient services to various domestic and international clients.



MARBLE · ARTIFICIAL STONE · QUARTZ · TERRAZZO
全品类石材深度服务商
DEPTH-TYPE SERVICE PROVIDER FOR COMPLETE RANGE STONE



PRODUCTION PROCESS

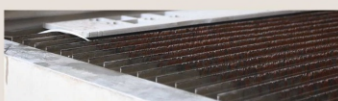
Through multi-stages collaborative production, we not only meet the diverse needs of our clients but also efficiently address their various demands. This approach enhances production efficiency and improves product quality.



CUTTING



WATER JET



COMPOUND MATERIAL



WORKMANSHIP



POLISHING



QUALITY TESTING

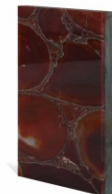


FINISHED PRODUCT

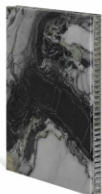


COMPOSITE STONE

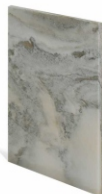
Stone composite technique has emerged as a new production process in response to the increasingly competitive stone market, limited availability of mining resources, and high application costs. The main advantage of this technique allows the preservation of the natural stone's surface effect and texture while reducing the amount of stone required, lightening the weight of the stone, enhancing its characteristics and reducing further modification complexity. This ultimately improves work safety and saves installation and maintenance costs.



Stone composite Glass



Stone composite
Honeycomb aluminum



Stone composite
Fibreboard



Stone composite
Artificial stone



Stone composite Ceramic

STONE COMPOSITE HONEYCOMB ALUMINUM FEATURES

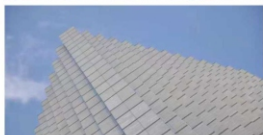
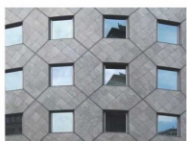
Stone composite honeycomb aluminum features.

Light weight, only 1/3 of the weight of traditional stone, more convenient installation.

High strength, better safety performance (Through hot and cold cycle test).

With fire and heat insulation performance and corrosion resistance.

Sustainable building materials, in line with the concept of science and technology and environmental protection.



幕墙案例
EXTERIOR WALL CASE



COMMERCIAL SPACE



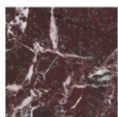
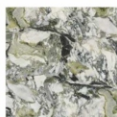
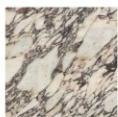
TERRAZZO SPACE





HOME DECORATION SPACE

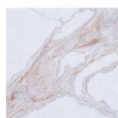
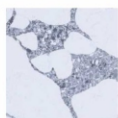
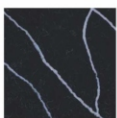
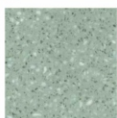
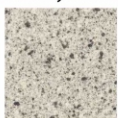
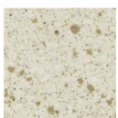
Available in a variety of colors

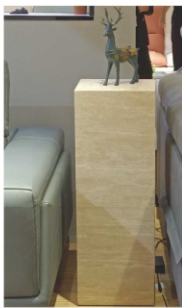


KITCHEN SPACE



Available in a variety of colors

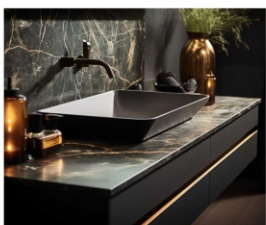
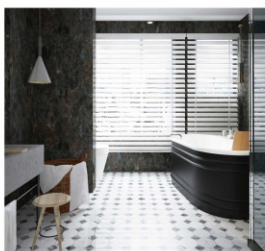
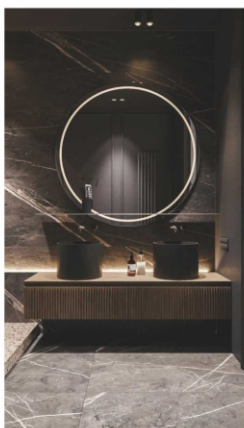
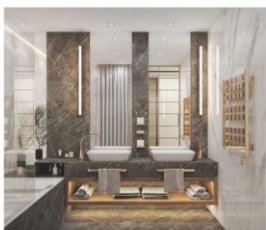
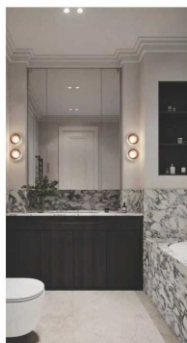




CUSTOM FURNITURE



BATHROOM SPACE



FINISHED PRODUCT DISPLAY



Terrazzo series

The pursuit of quality life, but not to explore the nature of stone, the granular texture and ceramic tile meticulous combination reflects an attitude for a better life.



Fine polishing
 Flat and consistent
 Cut flat without burrs



FINISHED PRODUCT DISPLAY

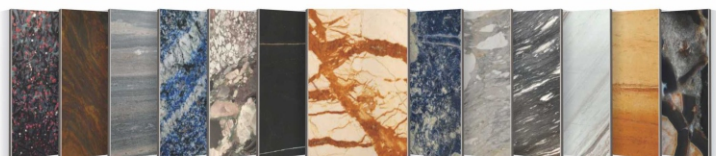
Texture first

The unique charm of the raw stone

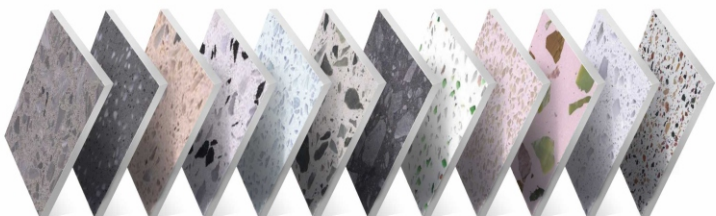
Natural cornerstone with laser engraving to create a unique pattern of the product
 Delicate touch, after six processes of strict grinding, smooth and wear-resistant



NATURAL STONE PARTIAL PRODUCT DISPLAY



TERRAZZO PARTIAL PRODUCT DISPLAY



QUARTZ PARTIAL PRODUCT DISPLAY

